



# SDL 5000 Series DataHog2

The Skye DataHog loggers have been available for several years as small easy to use devices suitable for many applications.

The DataHog2 has a large storage memory and extended battery life to allow long term projects to be monitored at remote sites, or short term logging at frequent intervals.

The range of input types is varied - customers can use their own sensors or choose from Skye's range of precision sensors. Choose combinations of single ended or differential voltage, current inputs or digital count.

Channels can be individually programmed with logging interval and gain to suit each sensor type. Units for scaling are defined by the user for easy and straightforward operation. At user-set levels, the DataHog2 will give an electrical relay or alarm output from up to two different channels. There is also a timed start/stop function.

Supplied with a 'ready-to-go' package of batteries, datalead, USB serial converter & Windows communication software

Dedicated, accurate and reliable systems, which are easy to use, completely weatherproof, robust, durable and low cost.

User selectable logging and integration intervals, plus a 24 hour summary.

Multi-channel with a choice of voltage, current or digital count inputs.

Optional electrical relay outputs for switching or alarm facilities.

Battery operated with a choice of additional power supplies - solar and mains.

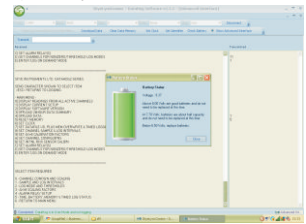
Access via a portable PC, permanent cable link or GSM mobile phone remote data link.

Real-time clock for synchronization with other installations.



## Software

SkyeLynx Comms software is supplied free of charge with all DataHog2 and MiniMet2 dataloggers. Allows logger setup, configuration and data download.



## SDL 5000 SPECIFICATIONS

### Operating Temperature

-20 to +70°C standard range (units for extended temperature range available)

### Housing

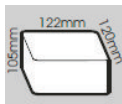
Grey ABS - Sealed to IP65

### Mounting

Can be mounted in any position

### Weight & Dimensions

1100g



### Connections

Binder subminiature type 8& 5 pin Sealed to IP65 when mated with plug or blanking cap

### Memory

Battery backed RAM, 1 Mbit. E.g 2 channels, 8060 recordings of each channel plus date and time

### Clock

Real time YY,MM,DD time clock enabling synchronisation of several units. Clock backed by lithium battery

### Resolution / Units

15 bits/ User definable scaling and units

### Power

-Standard: 6 x 'C' batteries (4-6months). Internal 10 year lithium battery for data memory and channel configurations  
-Optional: Mains Hog (mains power supply 240 or 110V)  
-Solar Hog (solar power)

### Inputs

-Voltage - single ended or differential +2mV to +2V  
-Current 0-200nA to 0-400 A  
-Digital count  
-RH  
-10k thermistor  
-Wind Direction

### Outputs

4 optional independent electrical relay switches. Open/close contact on user set conditions

### Modes

-Each channel configured individually  
-Logging intervals - 10, 20, 30 secs, 1, 2, 5, 10, 20, 30 mins, 1, 2, 3, 4, 6, 12 hours  
-Integration intervals - same as logging intervals above  
-Transmit date - As above and to RS232 while logging  
-Transmit data on demand from signal via RS 232  
-Stop/start logging time

### Communications

RS232C, ASCII output will communicate with any PC. All units are supplied with a datalead, USB serial converter and software for an IBM compatible PC. Data Offload at a baud rate of 9600. Binary offload option and Instant 'wake up'

## ORDERING INFORMATION

There is a comprehensive list of part numbers available depending on the number of channels required, the following are some examples:

SDL 5050 - 1 Channel DataHog2 datalogger

SDL 5450 - 9 Channel DataHog2 datalogger

SDL 5800 - 16 Channel DataHog2 datalogger

### Accessories

SKM 225 - Pole/wall mount short arm & fixings for DataHog up to 9 channels

SKM 225a - Pole/wall mount short arm & fixings for DataHog with 9 or more channels

/1R - 1 relay output fitted to logger  
/2R - 2 relay outputs fitted to logger  
/3R - 3 relay outputs fitted to logger  
/4R - 4 relay outputs fitted to logger

ACC/8 - waterproof dustcap for spare sockets

/1 - DataHog2 plug (this should be added to any sensors that are to be used with the logger)

**Skye Instruments Ltd**

21, Ddole Enterprise Park, Llandrindod Wells  
Powys LD1 6DF, United Kingdom

TEL +44 (0)1597 824811

EMAIL [skyeemail@skyeinstruments.com](mailto:skyeemail@skyeinstruments.com)

WEB <http://www.skyeinstruments.com>